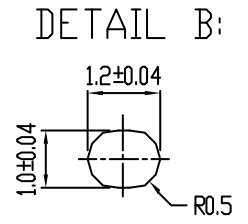
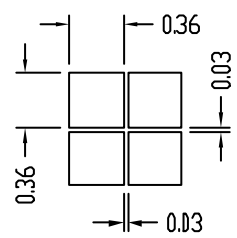
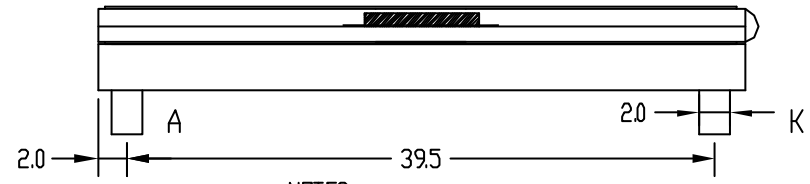
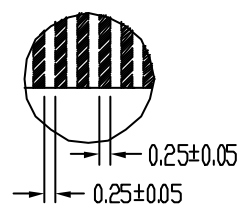


1	V4
2	V3
3	V2
4	V1
5	V0
6	VR
7	C2-
8	C2+
9	C1-
10	C1+
11	C3+
12	VOUT
13	VSS
14	SID
15	SCLK
16	VDD
17	RS
18	CS1B
19	RESETB
20	NC



DETAIL C:



- NOTES:
- | | |
|---------------------------|------------------------|
| 1. DISPLAY TYPE: | FSTN |
| 2. VIEWING DIRECTION: | 6:00 |
| 3. POLARIZER MODE: | TRANSFLECTIVE/POSITIVE |
| 4. LOGIC VOLTAGE: | 3.0V |
| 5. LCD OPERATING VOLTAGE: | 7.0V |
| 6. DRIVE METHOD: | 1/32 DUTY 1/6 BIAS |
| 7. OPERATING TEMP.: | -20°C~+60°C |
| 8. STORAGE TEMP.: | -30°C~+70°C |
| 9. CONTROLLER: | ST7565R |
| 10. BACKLIGHT: | LED(YELLOW-GREEN,4.1V) |
| 11. UNMARKED TOLERANCES: | ±0.3mm |
| 12. CONNECTOR: | FPC |

CUSTOMER APVL	CUSTOMER	DATE	
DRAWN	SCALE	TITLE	
DFTG CHK	UNIT	MI10032A-G-1	
ENGR CHK	mm	MODEL	
APPROVAL			
MULTI-INNO TECHNOLOGY CO.,LTD.			DWG NO
			PAGE 1/1